



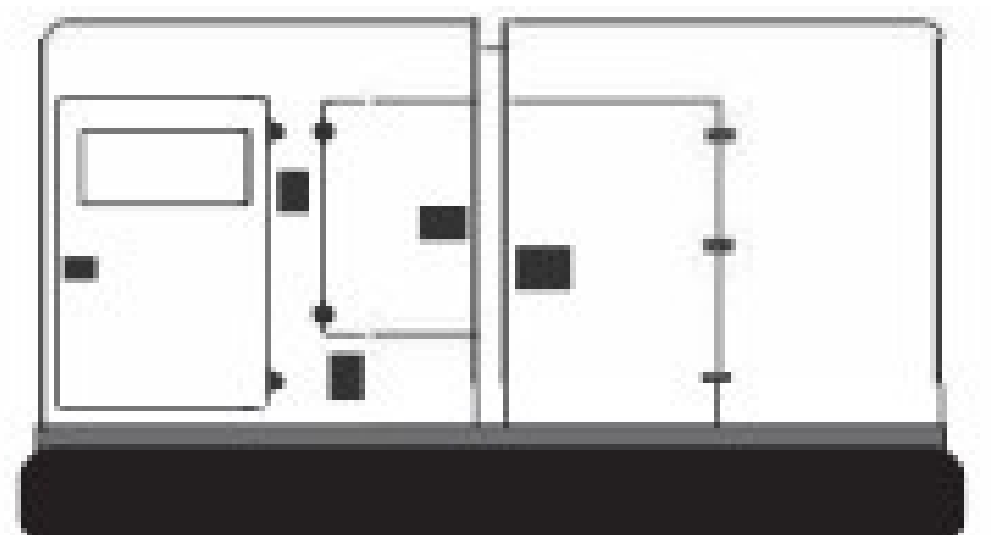
# ZENITH

THE PINNACLE OF POWER

## ZPDG66S

# SPECIFICATIONS

[www.zenithpowerltd.com](http://www.zenithpowerltd.com)



# ZPDG66S

50 Hz @ 1500rpm, 3-phase

---

## Standards & Conditions

### Design Standards

The designs and the productions are in conformity with:

- Conformance Européenne (CE)
- China Compulsory Certification (CCC)
- ISO8528-5:2005
- GB/T2820.5-2009

### Environmental Operating Conditions

- Installation place: Outdoors or indoors (well ventilated)
- Ambient temperature: -25 degrees C TO 45 degrees C. The coolant heater is needed when the temperature is below 5 degrees C
- Humidity: Less than 80%
- Altitude: Below one thousand (1000) metres.

### Factory Inspection

- Inspection items.
- Protection devices working test.
- Starting ability in normal temperature.
- 50% rated power load moment capability.
- Voltage deviation and speed variation: 0%, 25%, 50%, 75%, 100%, 110% Load

### Painting Process

- Painting process specifications and colours are based on the manufacturer's standard.
- The customer could also choose the colour which the manufacturer offers.

## General Features

- Perkins engine 1103A-33TG2
- Close coupled to a Leroy Somer alternator LSA42.3L9
- Microprocessor control module PLC-920
- Main circuit breaker: 100A
- Rotate speed governor: Mechanical governor
- Excitation System: Self excited, SHUNT
- A.V.R.Model: DSR
- Key switch
- Emergency stop switch
- ATS (automatic transfer switch) receptacle
- 1 x 12V/70AH sealed for life maintenance free battery
- Lockable battery isolator switch
- Powder coated canopy
- 50 degrees C, radiator
- Oil pump on the engine
- Steel base frame with forklots
- Vibration isolators between the engine/alternator and base frame
- Dry type air filter
- Base fuel tank for 12 hours running
- Drain points for fuel tank
- Operation Manual/Specifications

# Equipment Specifications

## General technical data

Model : ZPDG66S

Tank capacity: 160L

Dry weight: 1359kg

Sound Pressure Level: @7m: 68.2 dB(A)

Dimensions LxWxH: 2300\*1115\*1551mm

Standby Power: 66kVA/53kW

Prime Power: 60kVA/48kW



Voltage	380V	400V	415V	440V	
Ampere	91.2A	86.6A	83.5A	78.7A	
Genset Fuel Consumption					
Frequency/Load	25%	50%	75%	100%	110%
50Hz (L/h)	N/A	7.2	10.4	13.9	15.4

## Power System

### Engine

Engine Manufacturer/Brand: Perkins

Engine Model: 1103A-33TG2

Dimensions: LxWxH: 1049x634x951mm

Dry Weigh (approx.) : 420kg

Number of Cylinders: 3

Bore: 105mm

Stroke: 127mm

Displacement: 3.3L

Compression Ratio: 17.25

Type of injection: Direct injection

Intake System: Turbocharged

Intake Resistance: 8kPa

Cooling System: Water cooled

Fan: Pusher

Battery Voltage: 12V

Type of Fuel: RF75-T-96 / DIN EN590 / BS2869 class A2

Type of Oil: APi-CG4/ CH4

Oil Capacity: 8.31L

Type of Coolant: Glycol mixture

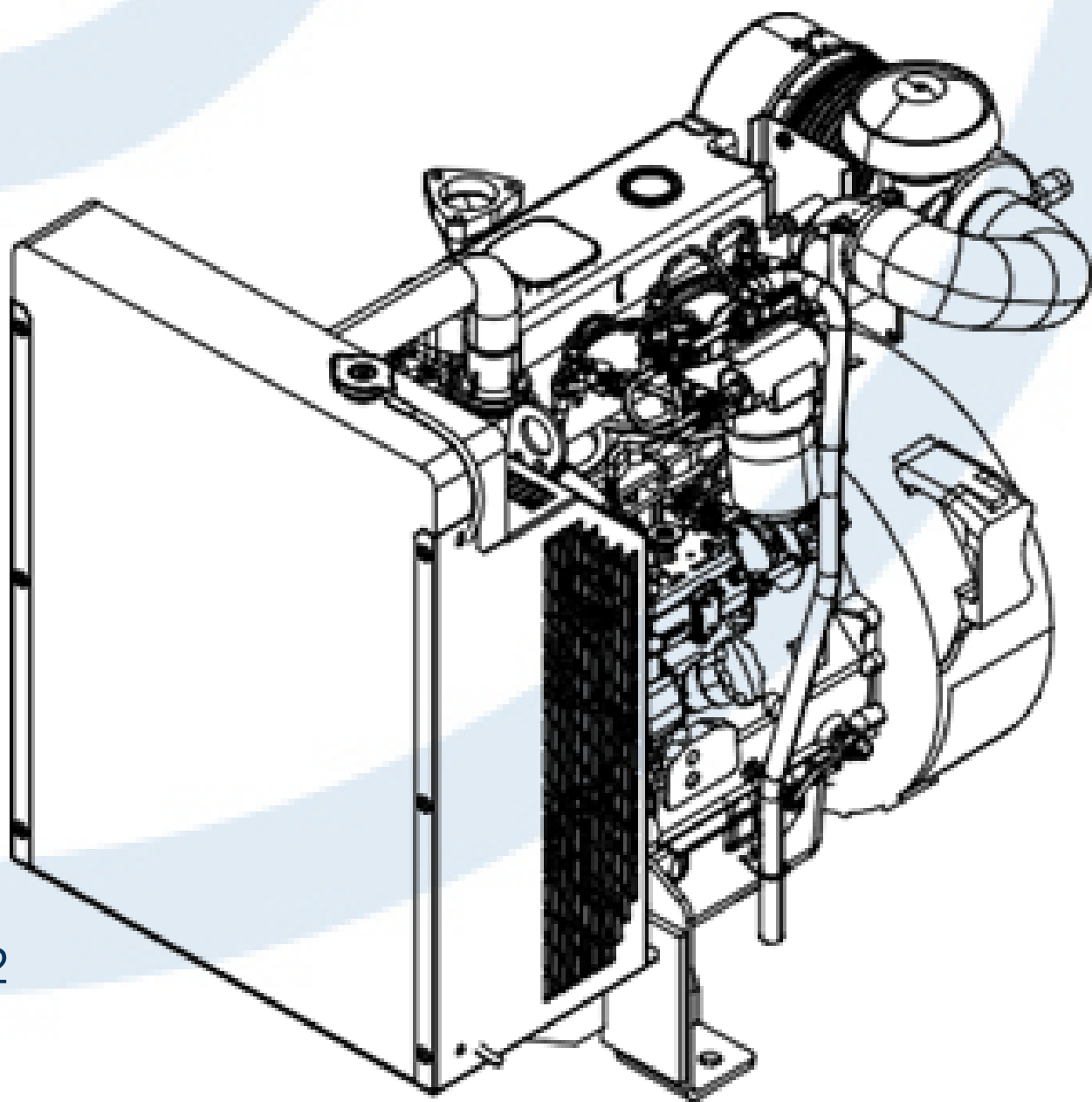
Coolant Capacity: 7.0L

Back Pressure: 10.2kPa

Standby Power: 60.5kW

Prime Power: 55kW

Fuel Consumption(100%load): 13.9L/h



## Alternator

Alternator Manufacturer/Brand: Leroy Somer

Alternator Model : LSA42.3L9

Exciter: Brushless

Cooling Fan: Cast alloy aluminium

Windings: 100% copper

Insulation Class: H

Winding Pitch: 2/3

Terminals: 12

Drip Proof: IP21

Altitude:  $\leq 1000\text{m}$

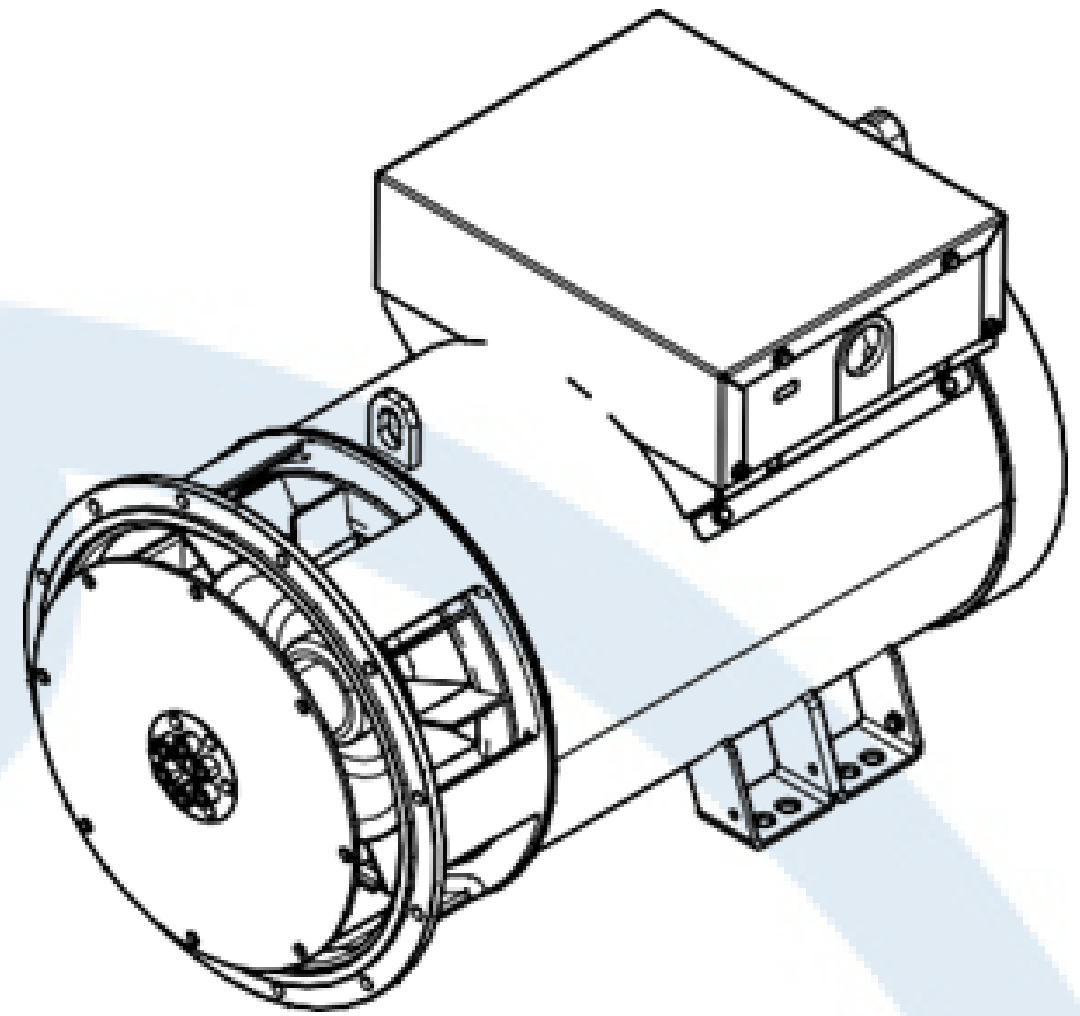
Overspeed: 2250rpm

Air Flow:  $11.8\text{m}^3/\text{min}$ (50Hz),  $14.5\text{m}^3/\text{min}$ (60Hz)

Voltage Regulation:  $\pm 1.0\%$

Total harmonic TGH / THCat no load  $< 1.5\%$  - on load  $< 5\%$

Telephone Interference: THF $<2\%$ ; TIF $<45$

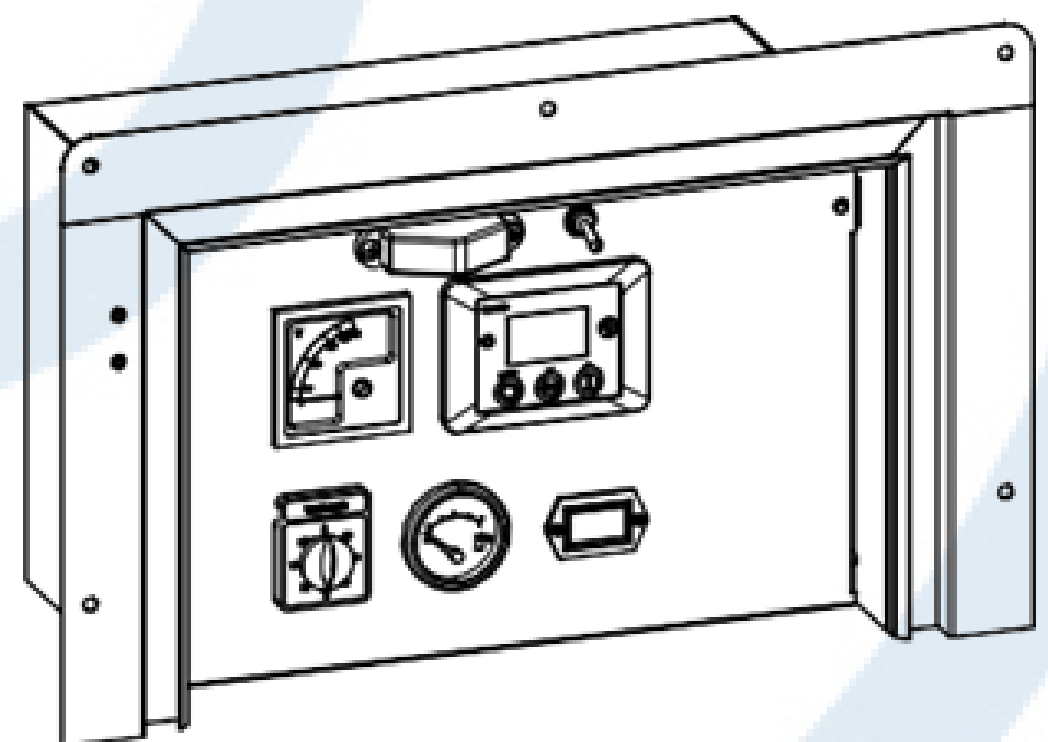


## PLC-920 Control System

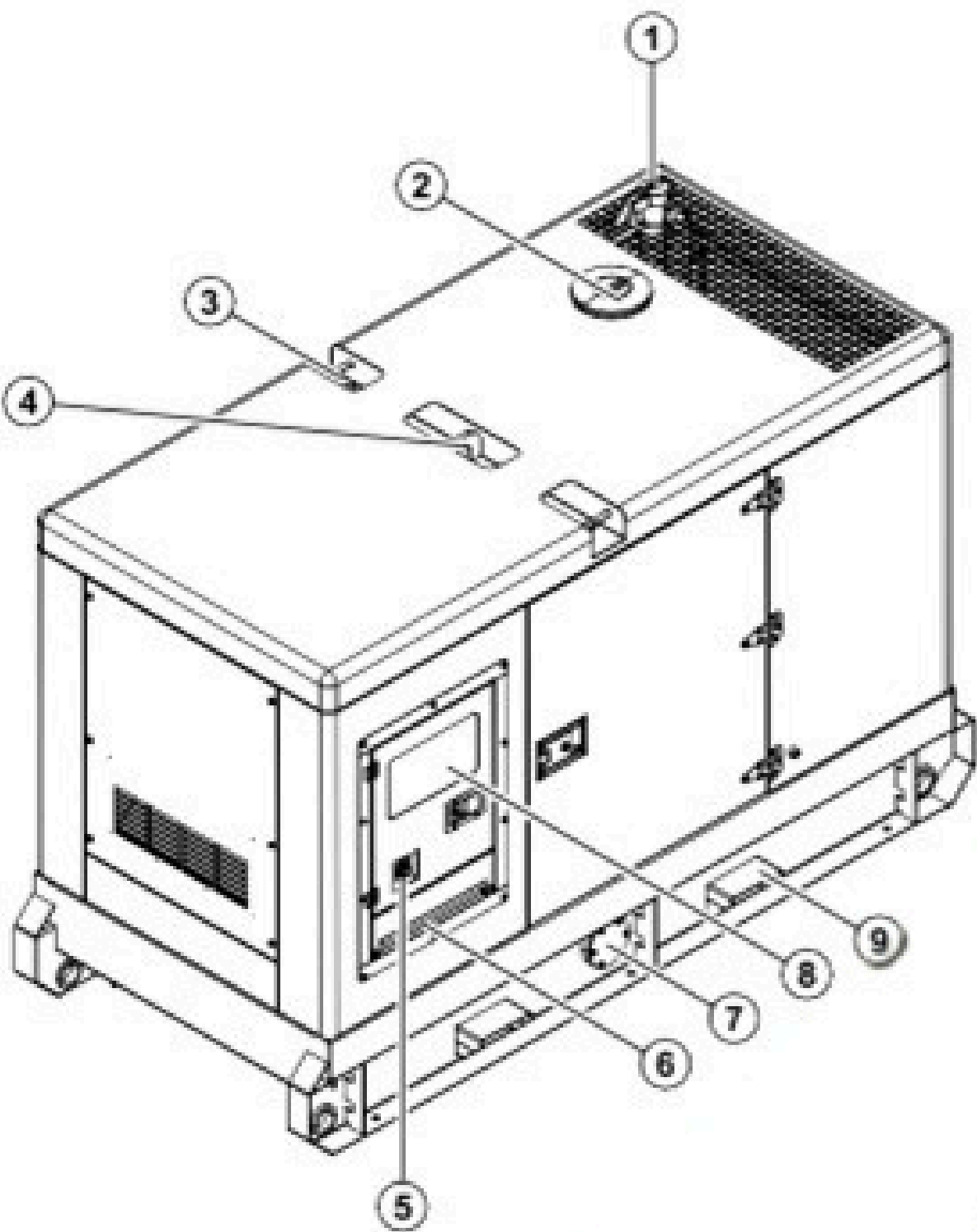
PLC920 is an advanced control module based on micro-processor designed to control the engine via a key switch and push buttons on the front panel. The module is used to start and stop the engine and indicate fault conditions, automatically shutting down the engine and giving a true first up fault condition of an engine failure.

### Standard Control Function

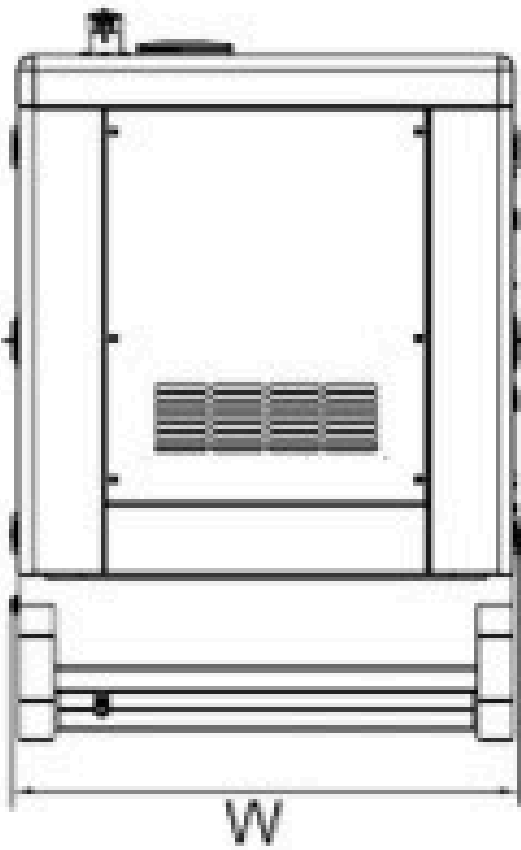
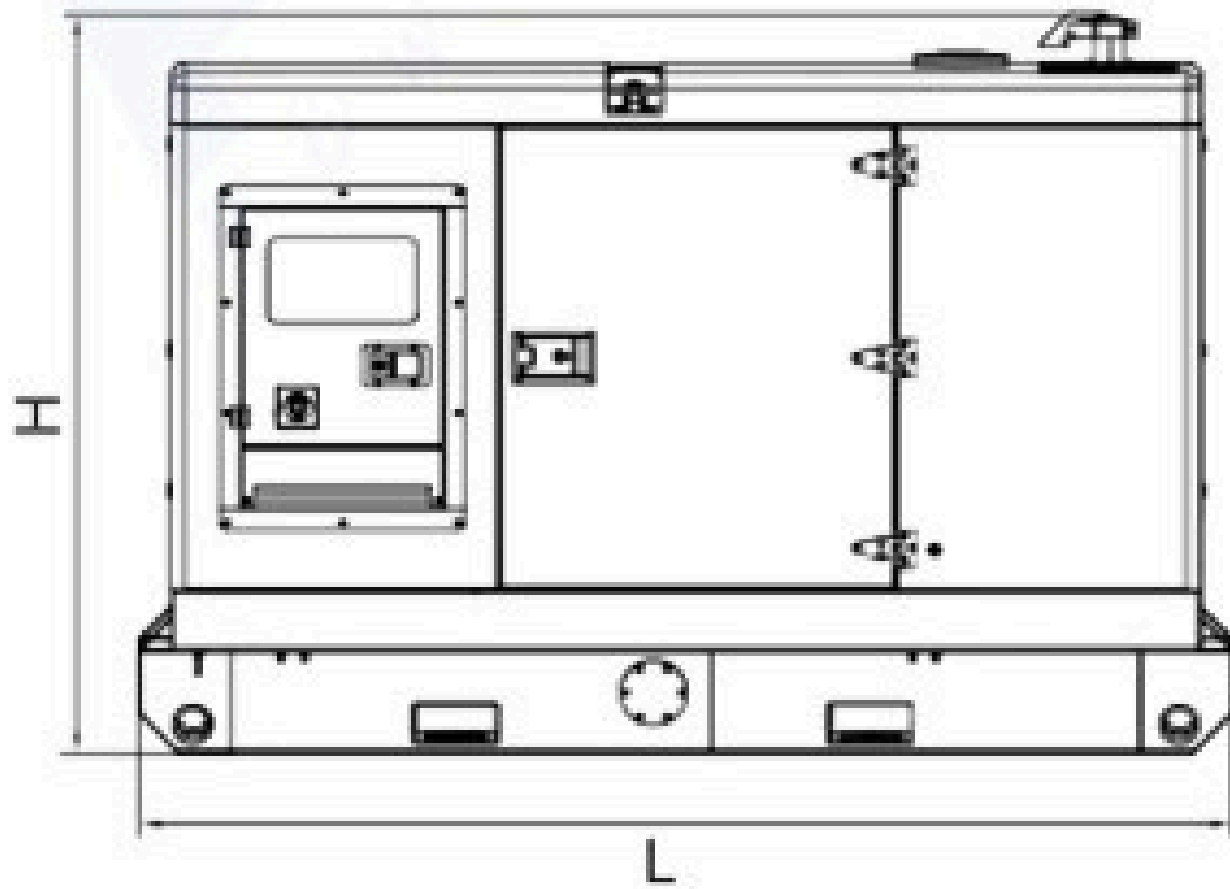
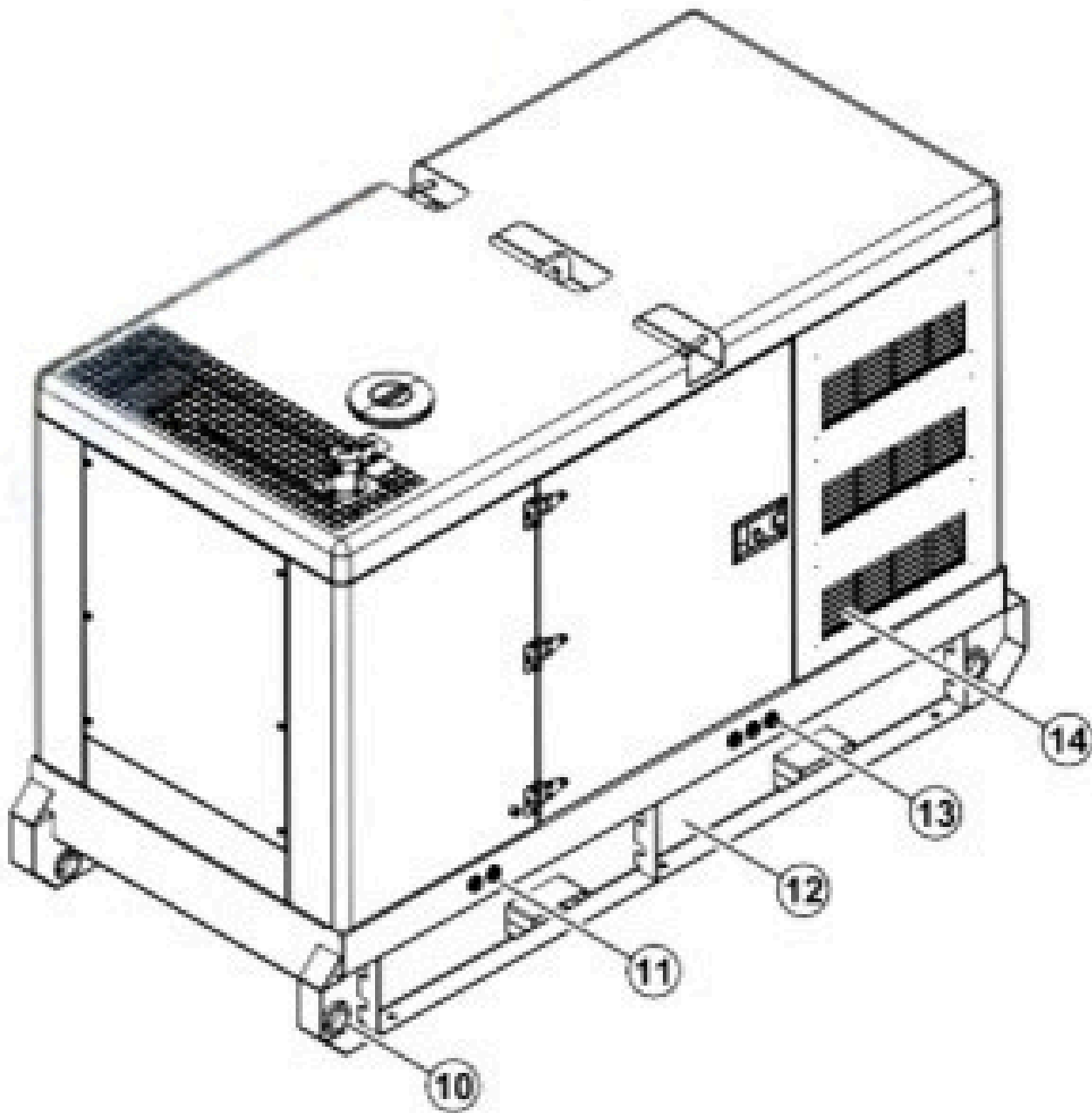
- Manual Engine Control Module
- Low Oil Pressure
- High Engine Temperature
- Auxiliary Shutdown
- Overspeed Protection
- Protection hold-off timer
- Charge Failure warning



# Overall Dimensions

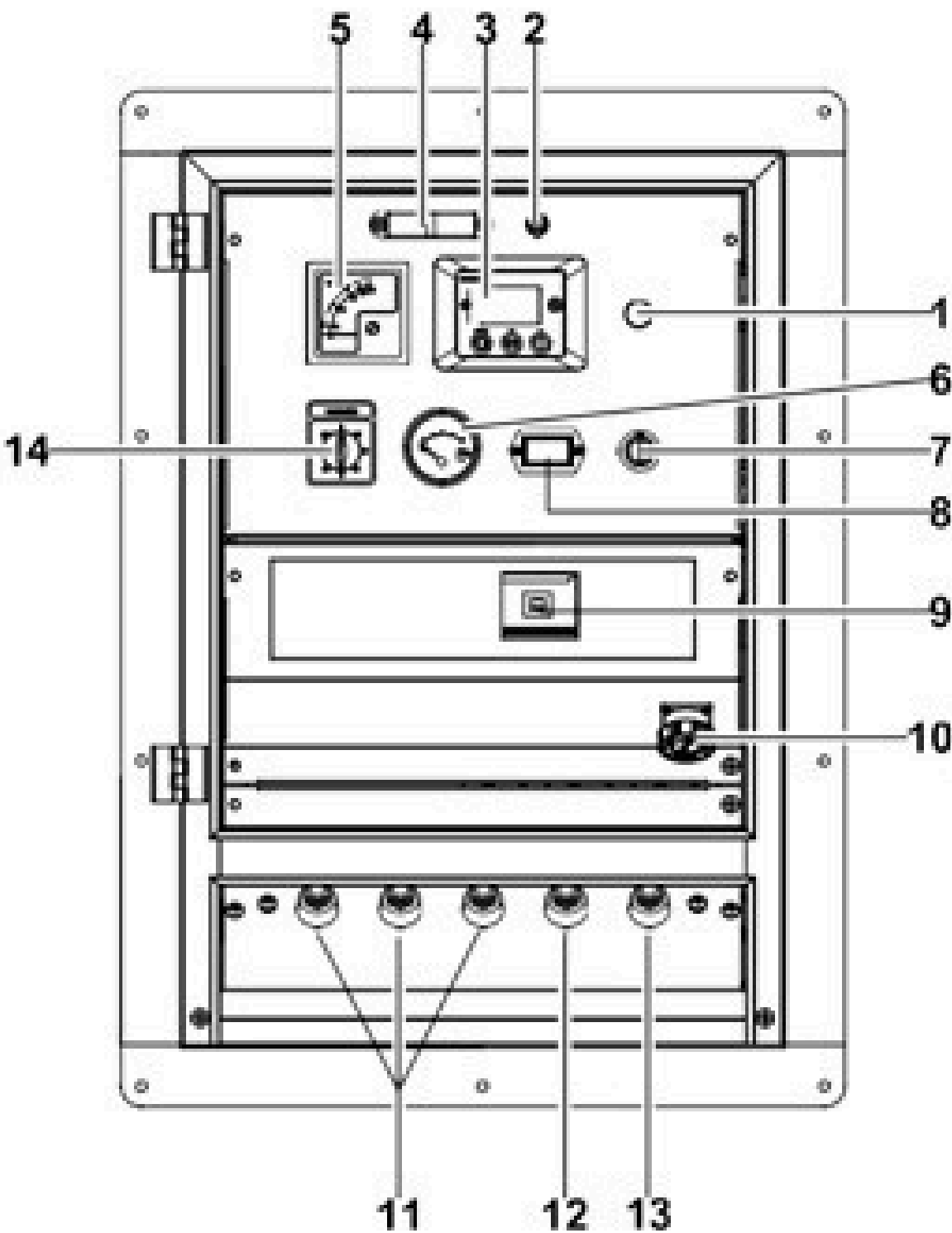


- ⑦ Fuel drain
- ⑥ Cable trench
- ⑤ Emergency stop switch
- ④ Lifting lug
- ③ Roping lug
- ② Coolant inlet
- ① Exhaust outlet
- ⑭ Air inlet
- ⑬ Coolant drain/  
External fuel inlet/return hose fitting
- ⑫ Base frame
- Oil drain hose fitting
- Tie down
- Fork lift channel
- Control cabinet



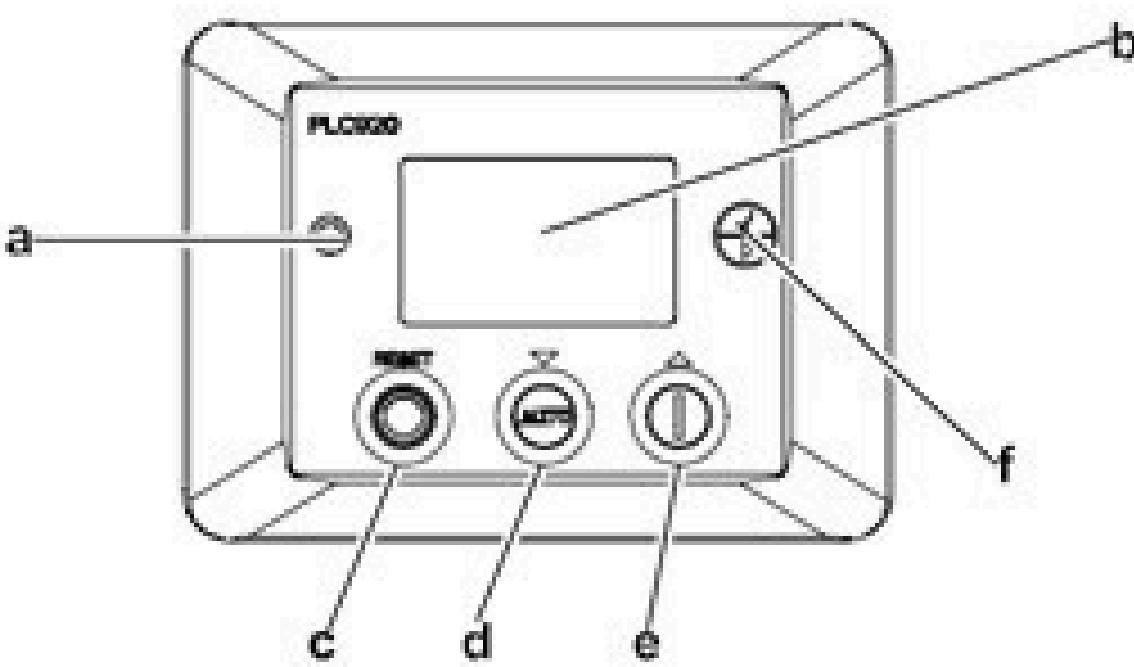


# Control System



- 1 Charge indicator
- 2 Control cabinet lamp switch
- 3 Control module
- 4 Control cabinet lamp
- 5 Voltage meter
- 6 Fuel level meter
- 7 Key switch
- 8 Time counter
- 9 Main circuit breaker
- 10 Mains input /ATS /Remote communication connector
- 11 Live wire terminal
- 12 Neutral wire terminal
- 13 Ground wire terminal
- 14 Voltmeter change-over switch

Control & field wiring cabinet



- a Alarm indicator
- b Main status display
- c Stop/reset button:
- Next page (Configuration mode only)
- Auto start button:
- d Decrease value/next item (Configuration mode only)
- Start button:
- e Increase value/next item (Configuration mode only)
- f Navigation button:
- Accept (Configuration mode only)

Control module

